

- ✓ RIGHT PRODUCTS
- ✓ RIGHT PLACE
- ✓ RIGHT TIME

Square Drive Pan Head Screws - Self Drill, Steel to Steel, 4.2 x 13mm - ETA Approved



Square Drive Pan Head Screws - Steel to Steel are a light duty self drilling screws for smaller steel sections. No pre-drilling is necessary as the screws tap their own thread, with the drill point removing excess material.

These are also ETA Approved and available in size 4.2 x 13mm.



Description

Size: 4.2 x 13mm

Dimensions:

- Head diameter - 8mm +/- 0.2mm with locking teeth on underside
- Thread - BSD
- Cutting Point - #2 Point, Z Style

Material: AISI C1022 Carbon Steel

Finish: Bright Zinc Plated (BZP)

Drill Capacity: 1.0 - 2.5mm

Recommended Drill Speed: 1500-2500rpm

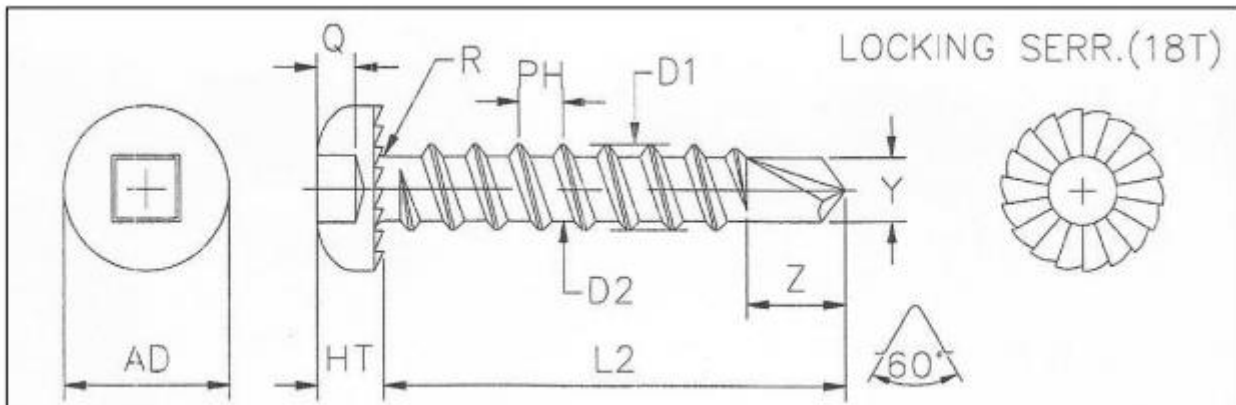
Torsional Load Test: 4.51Nm min

Technical data supplied by the manufacturer.

- Intended Use: Light Section Sheet Steel
- Conforms to Standard - DIN7504
- Bright Zinc Plating (BZP) up to 12 microns

- ✓ RIGHT PRODUCTS
- ✓ RIGHT PLACE
- ✓ RIGHT TIME

Product Dimensions



D1	4.2 mm	SAE 1022 Carbon Steel
PH	1.41 mm (18 TPI)	Pan head with square recess and locking serrations
L2	13 mm	Drill point: 2
Z	5.1 mm	Not suitable for use with a washer
AD	8 mm	Bright finish
		For stitching thin steel sheets
		Additional lengths from L2 = 13 mm to L2 = 50 mm are within the scope of this assessment, provided the geometry remains otherwise unchanged.

Remark: This technical data sheet replaces all previous versions. The technical data contained herein is given in good faith and we cannot be held liable for any errors, inaccuracies, omissions or editorial failings. The information detailed in this technical data sheet is given by way of indication and is not exhaustive, users should contact either the seller or the manufacturer of the product for additional technical information concerning its use, if they think the information in their possession needs to be clarified in any way. Any illustrations shown are indicative only, and dimensions may differ slightly from batch to batch.