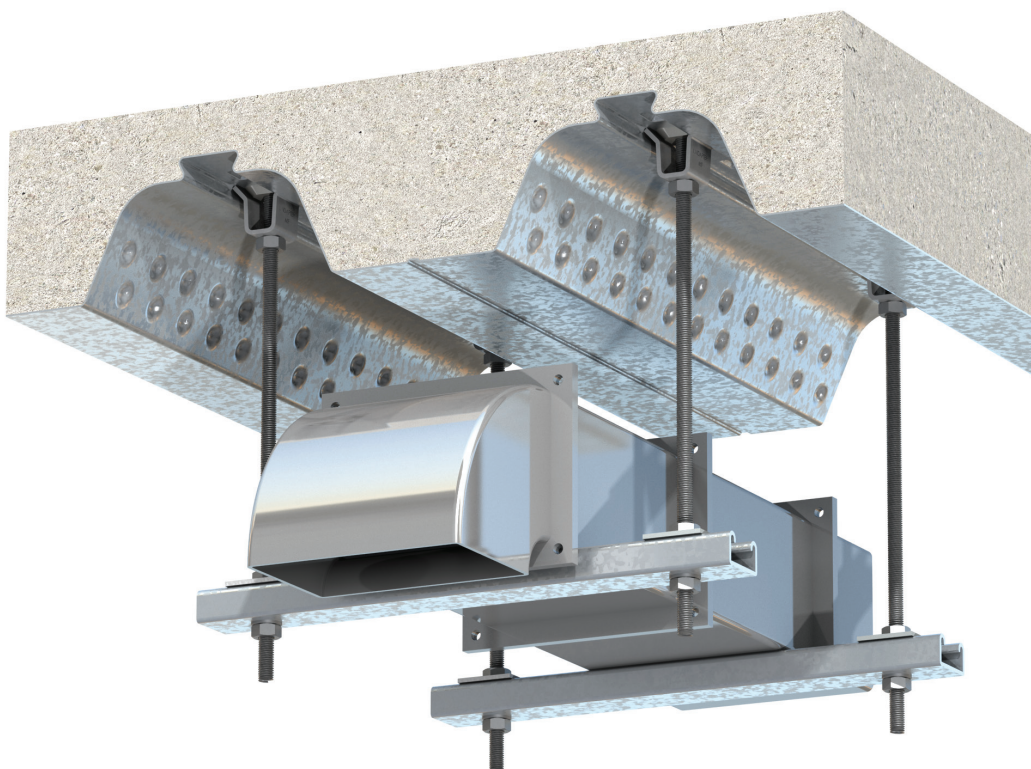
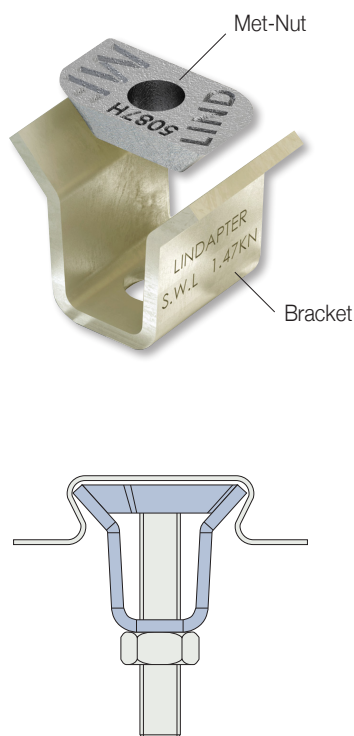


Type MF

Bracket: Steel strip, zinc plated + JS500

Met-Nut: Malleable iron, bright zinc plated



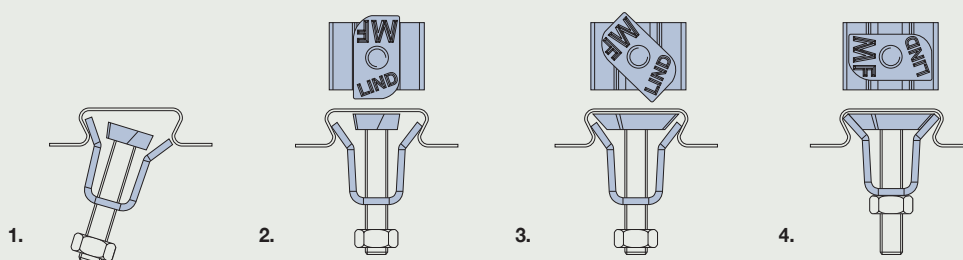
The Type MF is designed for MetFloor® 60 & Metfloor 80 profiles manufactured by Composite Metal Flooring (CMF®) (see page 56).

Please note, although this fixing is similar in appearance to the Lindapter Type MW2, the Type MF should not be used in profiles manufactured by Kingspan® Structural Products.

Product Code	Rod 4.6	Safe Working Load (3:1 Factor of Safety)	Tightening Torque
		Tensile / 1 Rod kN	Nm
MF06	M6	1.47	10
MF08	M8	1.47	10
MF10	M10	1.47	10

Order example: MF06

Installation



1. Pre-assemble the bracket and Met-Nut (flat surface facing up) onto the threaded rod and insert one side of the bracket into the re-entrant channel of decking.
2. Insert the other side of the bracket into position inside the decking.
3. Using either the threaded rod or thumb and forefinger, turn the Met-Nut clockwise until the position in Fig. 4 has been achieved.
4. Tighten the nut on the rod to a torque of 10Nm (prevent rod from rotating).

Note: If the decking profile is deformed/distorted, the fixing should not be installed.
If in doubt, please contact Lindapter's Technical Support Department for advice.