



# Lock

## To Suit 2mm Torqx Wire

These locks offer a fast-locking device solution for the suspension of a variety of services and used in conjunction with Torqx 2mm Wire.

Featuring a push-fit design and a slide release button. Versatile hanger that is ideal for signage, lighting, acoustic, mechanical and electrical applications.

### REQUIRED WIRE INFORMATION

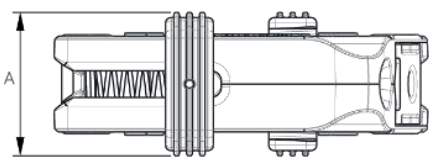
Torqx Wire Locks must be used in conjunction with Torqx Wire.

**Wire Construction** 7 x 7

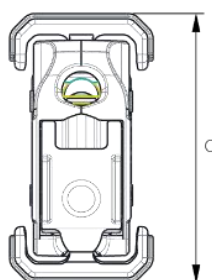
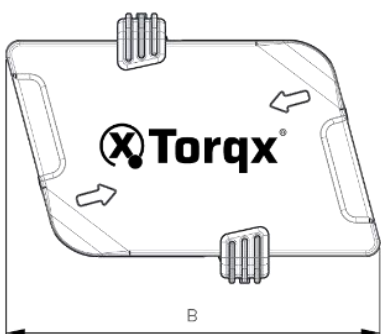
**Wire Nominal Tensile Strength:** 1960MPa \*

\*Pre-Galvanised Class B Wire Rope Manufactured to BS EN 1238

### SIZE INFORMATION



	Size [mm]
A	14
B	36
C	26



**Remark:** This technical data sheet replaces all previous versions. The technical data contained herein is given in good faith and we cannot be held liable for any errors, inaccuracies, omissions or editorial failings. The information detailed in this technical data sheet is given by way of indication and is not exhaustive, users should contact either the seller or the manufacturer of the product for additional technical information concerning its use, if they think the information in their possession needs to be clarified in any way. Any illustrations shown are indicative only, and dimensions may differ slightly from batch to batch.

Technical data supplied by the manufacturer.

## MATERIAL INFORMATION

<b>Housing:</b>	Zinc Alloy (ZL2)
<b>Buttons:</b>	Acetal Copolymer
<b>Rollers:</b>	Carbon Steel
<b>End Caps:</b>	Recycled Polypropylene
<b>Springs:</b>	304 Stainless Steel

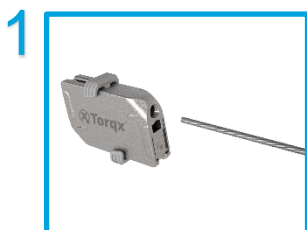
## PERFORMANCE INFORMATION

<b>Safety Factor:</b>	3:1
<b>Operating Temperature Range:</b>	-20°C ~ +70°C / -4F ~ + 158F

Wire Diameter	Safe Working Load
2 mm	60 kg *

\* Safe working load capacity when used with Torqx Wire

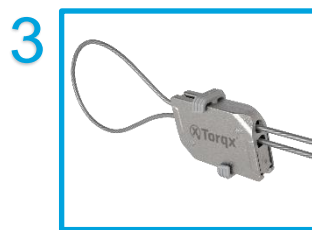
## INSTALLATION INSTRUCTIONS



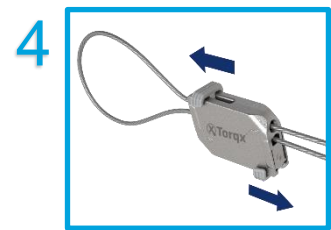
Insert the 2mm wire rope.



Loop around and feedback through the opposite side, ensuring at least 100mm of wire exits the hanger.



Loop is now secure.



To make adjustments to the wire, slide the button.

## MATERIAL INFORMATION

Failure to comply with these recommendations may result in product malfunction and possible damage to property or person and will invalidate the guarantee. No other warranty, whether express or implied, including any warranty of merchantability or fitness for purpose shall exist in connection with the sale or use of any product.



### LOADS

Always operate the product within its stated safe working load range. Suspend static loads only. Do not subject to shock loading. Do not adjust under load.



### LUBRICATION

Do not apply oil or any other lubricant to the hanger or any other part of the assembly.



### LIFTING

Do not use for lifting, either by crane or as part of a pulley system.



### WIRE ROPE

Trim any damaged filaments with the wire cutter before use.



### IMPACT

If there is potential for impact on the wire rope suspension or suspended services, seek advice prior to installation.



### INSTALLATION

Do not walk or stand on the product installation. Torqx products must not be used for personal suspension, fall protection or harnessing people.



### HANGING AT AN ANGLE TO VERTICAL

Ensure that the load calculation considers the effect of 'side load'. For example, at an angle of 60° to vertical the SWL is effectively reduced by 50%.



### PAINTING

Do not paint the hanger prior to installation. Ensure the hanger is in its final position prior to applying any paint to the wire rope assembly. Do not move the fastener after painting.



### DUCTING

When installing included angle teardrop hangers on round/spiral ducting or pipes, the final included angle of the assembly should not exceed 60°.



### STORING

Do not store the product outdoors, or in damp or abnormal conditions.



### ENVIRONMENT

Do not use in chlorinated or chemically corrosive atmospheres. Standard hangers are for use in dry and air-conditioned environments only. Stainless steel hangers should be considered for high to saturated humid environments after validation by a competent person.



### Y-FIT

Legs on Y-Fit not to be installed greater than 60°.



### SWIMMING POOLS

Not suitable for swimming pools.



### REPAIR, MODIFICATION AND RE-USE

Do not repair, modify or re-use products. If you have any queries regarding product performance, please contact your local distributor.



### TRACEABILITY

Always use the Torqx hanger with the specified wire rope supplied by Torqx. Torqx products should only be used with products supplied by Torqx and the warranty will not apply if our products are used with any products supplied by third parties.



### JOINING

Never join two ends together in-line.