

- ✓ RIGHT PRODUCTS
- ✓ RIGHT PLACE
- ✓ RIGHT TIME



## Blue Sealed Rivets

Blue Sealed Rivets, are made from galvanised steel and are used as a fitting element.

Their blue seal helps to compensate for oscillations and vibrations, which helps to provide stability to the connection between the air duct and required fitting such as partition plates, turning vanes, flow plates, ribs or valve blades.

### Description

Material: Galvanised Steel

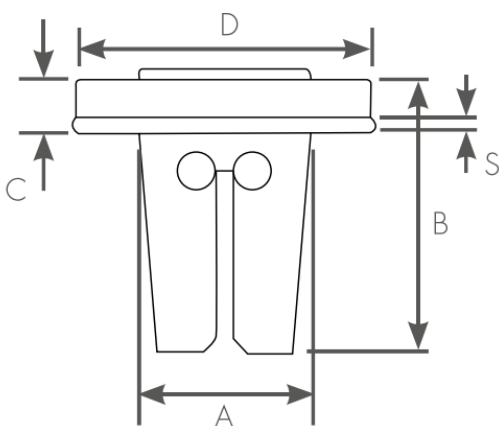
To Suit Sheet Thickness: 0.4-1.25

Gasket Material: EPDM

Pre-Assembled Seal Heat Resistance: Up to + 100°C

Technical data supplied by the manufacturer.

### Technical Information



A	9 mm
B	14 mm
C	4 mm
D	16.5 mm
S	1.5 mm

**Remark:** This technical data sheet replaces all previous versions. The technical data contained herein is given in good faith and we cannot be held liable for any errors, inaccuracies, omissions or editorial failings. The information detailed in this technical data sheet is given by way of indication and is not exhaustive, users should contact either the seller or the manufacturer of the product for additional technical information concerning its use, if they think the information in their possession needs to be clarified in any way. Any illustrations shown are indicative only, and dimensions may differ slightly from batch to batch.