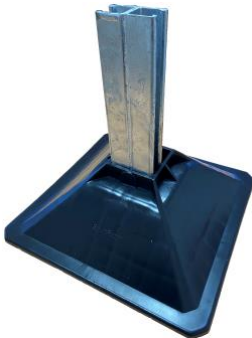




## Square H-Frame Plastic Foot – 400mm

This Dual Square Plastic foot has been designed to fit both 41x82 Back-to-Back Channel and 80x80 Box Section. Made from High Density Polyethylene (HDPE) plastic it's both lightweight and very robust. There is an anti-vibration foam pad attached to its base to prevent penetration of / or reaction with the waterproof roof membrane.

41x82 Back to Back Channel



80x80 Box Section



These feet can be used to create and join H Frames, that are suitable for the everyday installation of ductwork including associated attenuators, up to medium sized flow and return pipework and electrical containment. EG cable trays or cable ladders.

### TECHNICAL INFORMATION

Length (mm)	Width (mm)	Product Weight (kg)	Safe Working Load (Per Foot)
400	400	3.97	1000

Technical data supplied by the manufacturer.