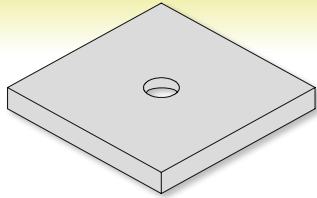
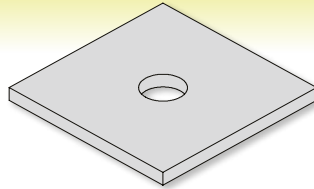


Square Plates

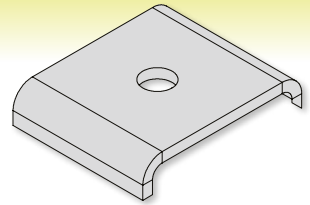
Square Plate (5mm Thick)



Square Plate (3mm Thick)



Lipped Square Plate (3mm Thick)



BRIGHT ZINC PLATED (BZP)

CODE	SIZE	BOX QTY
2017 01183	M6 / 40 x 40mm	100
2017 01184	M8 / 40 x 40mm	100
2017 01187	M10 / 40 x 40mm	100
2017 01189	M12 / 40 x 40mm	100

BRIGHT ZINC PLATED (BZP)

CODE	SIZE	BOX QTY
2017 01191	M8 / 40 x 40mm	100
2017 01192	M10 / 40 x 40mm	100

BRIGHT ZINC PLATED (BZP)

CODE	SIZE	BOX QTY
2017 01080	M8 / 40 x 49mm	100
2017 01081	M10 / 40 x 49mm	100
2017 01082	M12 / 40 x 49mm	100

HOT-DIP GALVANISED (HDG)

CODE	SIZE	BOX QTY
2017 01186	M6 / 40 x 40mm	100
2017 01185	M8 / 40 x 40mm	100
2017 01188	M10 / 40 x 40mm	100
2017 01190	M12 / 40 x 40mm	100
2017 06162	M16 / 40 x 40mm	100

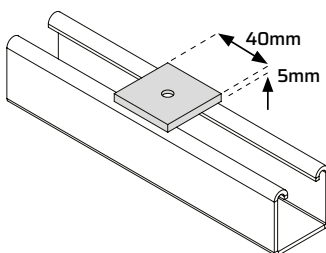
TECHNICAL DATA

Steel Minimum Yield Stress:	275N/mm ²
	Minimum coating thickness
Bright Zinc Plated (BZP)	5µm
Hot-Dip Galvanised (HDG)	55µm

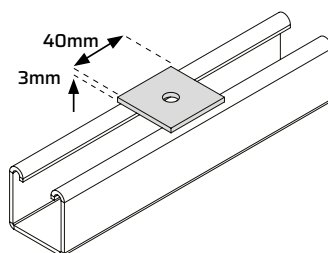
MAXIMUM SAFE LOADS

See Channel Nuts (page 1.) for relevant Maximum Safe Loads

SQUARE PLATE (5MM THICK)



SQUARE PLATE (3MM THICK)



LIPPED SQUARE PLATE (3MM THICK)

