

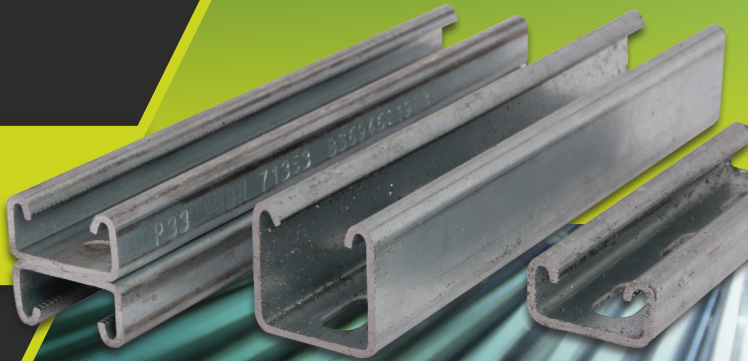


fixmart[®]
MEP & HVAC FIXING SPECIALISTS

Electrical Wholesale Range



**ORDER BY
5PM FOR NEXT
DAY DELIVERY!**



**January -
March
Issue**

01322 274226
sales@fixmart.co.uk

Electrical Wholesale Range

From supports to fixings we hold a great level of stock, so think of us as an extension of your warehouse providing quick and easy access to the products your customers regularly need. We buy in bulk and pass the savings on to you, removing the hassle of dealing with large cumbersome deliveries and freeing up valuable storage space. We help you to:

- **Manage your cashflow and storage** - order only what you need, with no minimum order quantity.
- **Meet last minute customer demands** - you'll find key lines always in stock.
- **Quickly check stock and prices 24/7** - we can set you up with an easy-to-use online login.
- **Fast collection or delivery** - we're ideally situated in Northfleet just off the A2, on route to London and the South East.



Simply order by 5pm for next day delivery or collection in 1 hour. Contact our team on 01322 274226 or via sales@fixmart.co.uk.

Carriage Charges:

Collection	Free
Orders over £200	Free*
Orders Under £200	£12 Carriage*

Collection Point:

Unit S, Springhead Enterprise Park, Springhead Road, Northfleet, Kent, DA11 8HJ

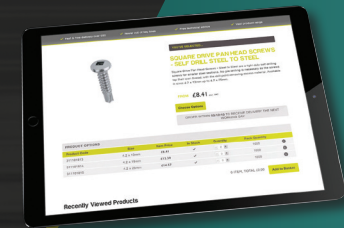
*Excluding orders which include 6m channel, as the carriage charge will be placed at the time of ordering.

Check Prices & Stock 24/7!

Simply request an Online Login to your account...

With an Online Login you can:

- View frequently purchased items
- Easily place repeat orders
- Receive instant order confirmations
- Manage your account

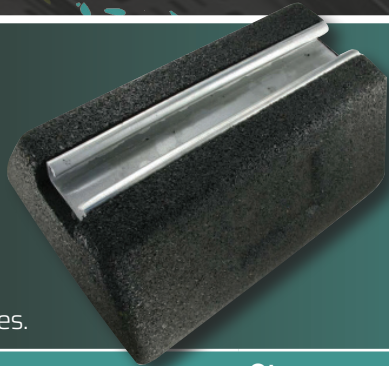


Contents:

Special Offers.....	4-7 & 24
3m & 6m Channel.....	8-9
Channel Nuts & Channel Accessories	10-11
Bracketry.....	11-13
Cable Tray.....	14
Cable Basket.....	14-15
Box Supports.....	15
Conduit.....	15
Studding & Studding Accessories	16-17
Hex Set Screws & Nuts	17
Washers	17-18
Fixings.....	18-19
Anchors.....	19-20
Roof & Mounting Supports	20-21
Suspension Products	21
Sealants, Paints & Tapes	22
Cutting Blades	22
PPE.....	23

SPECIAL OFFERS

Rubber Foot with Strut



See page 20 for other sizes.

Code	Size	Qty
3312 15844	250 (L) x 185 (W) x 100 (H) mm	1



90° Angle Bracket - 2 Hole



See page 10 for other types.

Code	Size	Finish	Qty
2013 01034	50 x 47mm	HDG	1



Channel Slotted (Lightweight) 41 x 21 x 1.5mm



See page 9 for other types.

Code	Length	Finish	Qty
2011 01004	3m	PG	1



1/2" Square Drive Channel Strut Sockets - Thin Walled

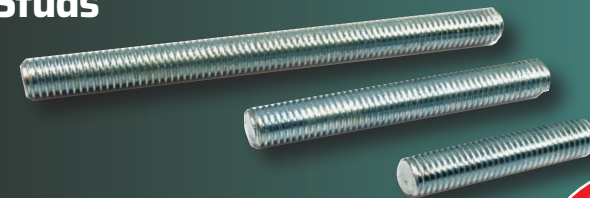


See page 10 for other sizes.

Code	Size	Qty
2012 01022	17mm (M10)	1



BZP Cut Studs



See page 16 for other sizes.

Code	Size	Qty
4020 03151	M10 X 100mm	100



SPECIAL OFFERS

See the back page for offers on B-Block Catenary Wire & B-Block

Hex Nuts

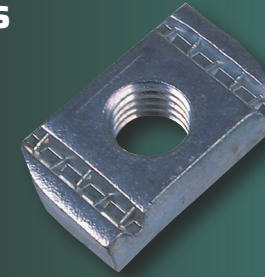


See page 17 for other sizes.

Code	Size	Finish	Qty
4017 02973	M10	BZP	100



Plain Channel Nuts



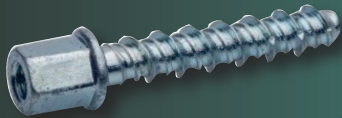
See page 9 for other options.

Code	Size	Finish	Qty
2014 01105	M10	BZP	100



JCP Concrete Screw Rod Hangers

FINISH - BZP



See page 20 for other types.

Code	Size	Embed Depth	Socket Size	Qty
3814 05721	M10 (6mm drill bit)	40mm	13mm	100

Hex Set Screws (Grade 8.8)



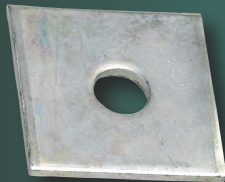
See page 17 for other options.

Code	Size	Finish	Qty
4015 12685	M10 x 25mm	BZP	100



Square Plate Washer

FINISH - BZP



See page 9 for other options.

Code	Size	Qty
4022 03254	50 x 50 x 3mm M10	100



Premium Sports Safety Specs - Anti Scratch

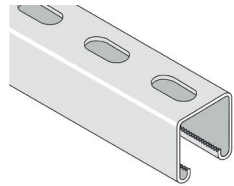


Code	Qty
7012 04226	12



Channel 3m & 6m

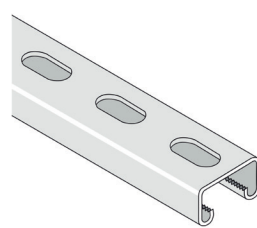
Channel Slotted 41 x 41 x 2.5mm



BEST SELLER

Code	Length	Finish
2011 01009	3m	PG
2011 01010	6m	PG
2011 11254	3m	HDG
2011 11942	3m	Stainless Steel

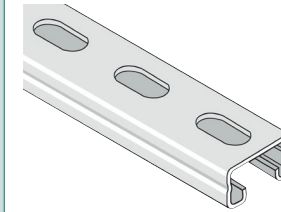
Channel Slotted 41 x 21 x 2.5mm



BEST SELLER

Code	Length	Finish
2011 01005	3m	PG
2011 11256	3m	HDG

Channel Slotted (Lightweight) 41 x 21 x 1.5mm

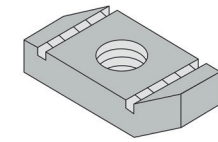


SPECIAL OFFER
See page 4.

Code	Length	Finish
2011 01004	3m	PG

Channel Nuts & Channel Accessories

Plain Channel Nuts

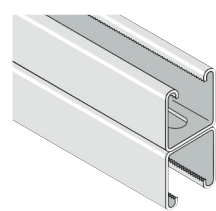


SPECIAL OFFER
See page 7.

Hot Dipped Galvanised options available.

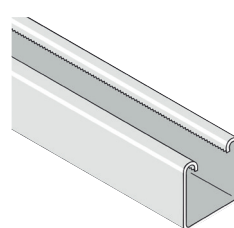
Code	Size	Finish	Qty
2014 01101	M6	BZP	100
2014 01103	M8	BZP	100
2014 01105	M10	BZP	100
2014 01107	M12	BZP	100

Channel Slotted Back to Back 41 x 41 x 2.5mm



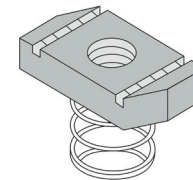
Code	Length	Finish
2011 01016	3m	PG
2011 01018	6m	PG

Channel Plain 41 x 41 x 2.5mm



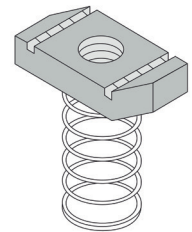
Code	Length	Finish
2011 01001	3m	PG
2011 01002	6m	PG

Short Spring Channel Nuts



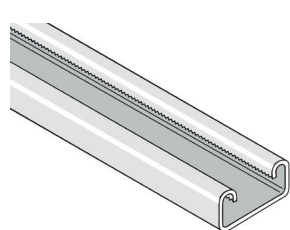
Code	Size	Finish	Qty
2014 01109	M6	BZP	100
2014 01111	M8	BZP	100
2014 01113	M10	BZP	100

Long Spring Channel Nuts



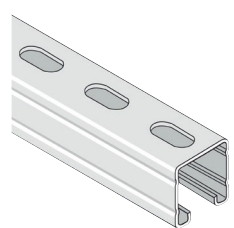
Code	Size	Finish	Qty
2014 01093	M6	BZP	100
2014 01095	M8	BZP	100
2014 01097	M10	BZP	100

Channel Plain 41 x 21 x 2.5mm



Code	Length	Finish
2011 01000	3m	PG

Channel Slotted (Lightweight) 41 x 41 x 1.5mm



Code	Length	Finish
2011 01008	3m	PG

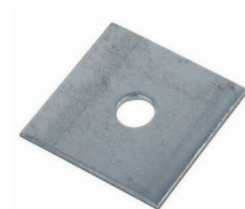
Square Plates - 5mm Thick



Hot Dipped Galvanised options available.

Code	Size	Finish	Qty
2017 01183	M6	BZP	100
2017 01184	M8	BZP	100
2017 01187	M10	BZP	100
2017 01189	M12	BZP	100

Square Plates - 3mm Thin



Code	Size	Finish	Qty
2017 01191	M8	BZP	100
2017 01192	M10	BZP	100

FINISH KEY: PG PRE GALV HDG HOT DIP GALV EZ ELECTRO ZINC BZP BRIGHT ZINC PLATED ZYP ZINC & YELLOW PLATED

Channel Nuts & Channel Accessories

½" Square Drive Channel
Strut Sockets
- Thin Walled

**SPECIAL
OFFER**
See page 5.



To suit 41x21
& 41x41 channel

Code	Size	Qty
2012 01022	17mm (M10)	1

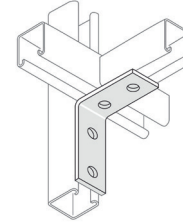
½" Square Drive Channel Sockets



To suit 41x41 channel

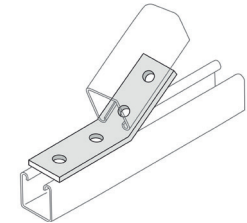
Code	Size	Qty
2012 01023	19mm (M12)	1

90° Angle Bracket - 4 Hole



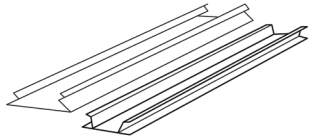
Code	Size	Finish	Qty
2013 01039	89 x 104mm	HDG	1

Obtuse Angle Bracket - 4 Hole



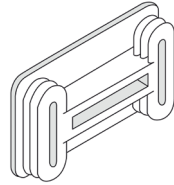
Code	Size	Finish	Qty
2013 01033	45° x 78mm	HDG	1

Cover Strips



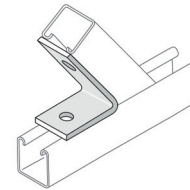
Code	Size	Finish	Qty
2012 01030	3m	Plastic / Black	1
2012 01032	3m	Plastic / White	1
2012 01031	3m	Silver / Metal	1

End Caps



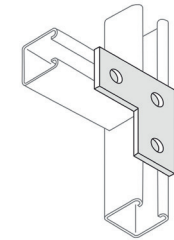
Code	Size	Finish	Qty
2012 11513	For 41 x 21	Black	100
2012 11514	For 41 x 21	White	100
2012 11515	For 41 x 41	Black	100
2012 11516	For 41 x 41	White	100

Acute Angle Bracket - 2 Hole



Code	Size	Finish	Qty
2013 01042	45° x 77mm	HDG	1

Flat L Bracket

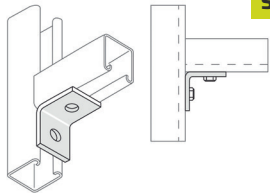


Code	Size	Finish	Qty
2013 01060	90 x 90mm	HDG	1

Bracketry

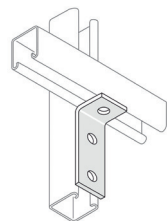
90° Angle Bracket
- 2 Hole

**SPECIAL
OFFER**
See page 5.



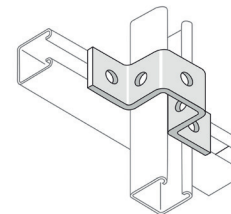
Code	Size	Finish	Qty
2013 01034	50 x 47mm	HDG	1

90° Angle Bracket - 3 Hole



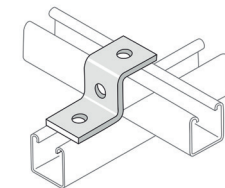
Code	Size	Finish	Qty
2013 01037	47 x 98mm	HDG	1
2013 01036	41 x 104mm	HDG	1

U Bracket (41 x 41)



Code	Size	Finish	Qty
2013 01082	41 x 137mm	HDG	1

Z Bracket (41 x 41)

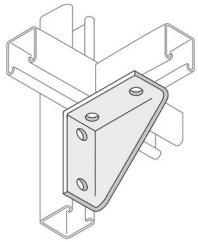


Code	Size	Finish	Qty
2013 01090	41 x 95mm	HDG	1

FINISH KEY: **PG** PRE GALV **HDG** HOT DIP GALV **EZ** ELECTRO ZINC **BZP** BRIGHT ZINC PLATED **ZYP** ZINC & YELLOW PLATED

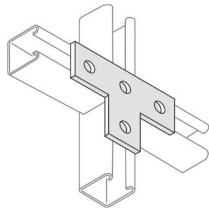
Bracketry

Gusseted Bracing Bracket



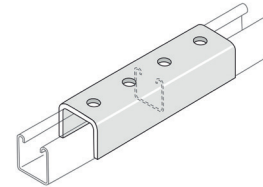
Code	Size	Finish	Qty
2013 01063	102 x 102mm	HDG	1

Flat T Bracket



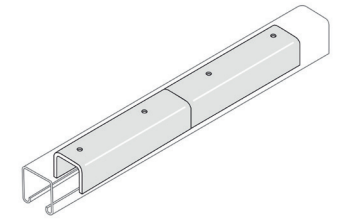
Code	Size	Finish	Qty
2013 01062	90 x 138mm	HDG	1

External Joiner (41 x 41)



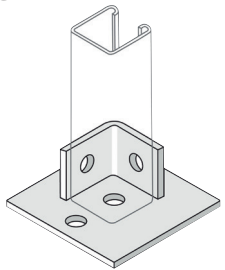
Code	Size	Finish	Qty
2013 01059	For 41 x 41	HDG	1

Internal Joiner (41 x 41)



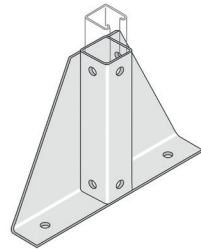
Code	Size	Finish	Qty
2013 01066	For 41 x 41	PG	1

Base Plate



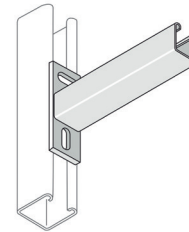
Code	Size	Finish	Qty
2013 01045	100 x 100 x 45mm	HDG	1

Gusseted Bracket Single Socket



Code	Size	Finish	Qty
2013 01065	305 x 225mm	HDG	1

Cantilever Arms (Single)



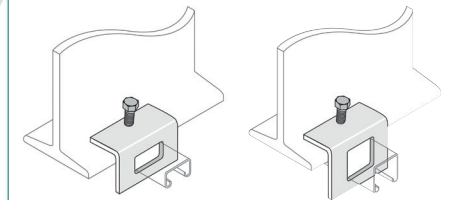
**BEST
SELLER**

Code	Size	Finish	Qty
2013 01053	150mm	HDG	1
2013 01054	300mm	HDG	1
2013 01055	450mm	HDG	1
2013 01056	600mm	HDG	1
2013 01057	750mm	HDG	1
2013 01058	900mm	HDG	1
2013 15388	1000mm	HDG	1

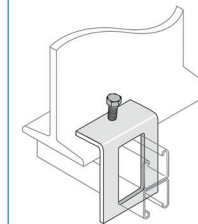
Window Beam Clamps

41 x 21mm Channel

41 x 41mm Channel

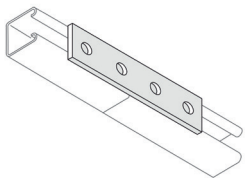


41 x 82mm Channel



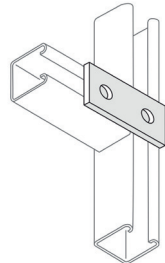
Code	Size	Finish	Qty
2013 01083	For 41 x 21	HDG	1
2013 01084	For 41 x 41	HDG	1
2013 01086	For 41 x 82	HDG	1

Splice Plate (4 Hole)



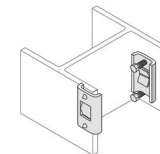
Code	Size	Finish	Qty
2013 01074	40 x 160mm	HDG	1

Splice Plate (2 Hole)



Code	Size	Finish	Qty
2013 01072	40 x 80mm	HDG	1

Internal Web Clamp (41 x 41)



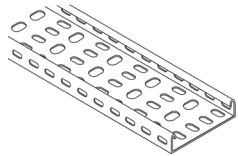
Sold in pairs.

Code	Size	Finish	Qty
2013 01068	For 41 x 41	HDG	1

FINISH KEY: PG PRE GALV HDG HOT DIP GALV EZ ELECTRO ZINC BZP BRIGHT ZINC PLATED ZYP ZINC & YELLOW PLATED

Cable Tray

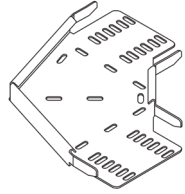
Cable Tray - 25mm Deep (3m lengths)



BEST SELLER

Code	Size	Finish	Qty
3019 01370	50 x 25mm x 3m	PG	1
3019 01371	75 x 25mm x 3m	PG	1
3019 01372	100 x 25mm x 3m	PG	1
3019 01374	150 x 25mm x 3m	PG	1
3019 01376	225 x 25mm x 3m	PG	1
3019 01378	300 x 25mm x 3m	PG	1
3019 01380	450 x 25mm x 3m	PG	1
3019 01382	600 x 25mm x 3m	PG	1

Flat 90° Bends - 25mm Deep



Code	Size	Finish	Qty
3019 01404	50 x 25mm	PG	1
3019 01405	75 x 25mm	PG	1
3019 01407	100 x 25mm	PG	1
3019 01409	150 x 25mm	PG	1
3019 01411	225 x 25mm	PG	1
3019 01413	300 x 25mm	PG	1
3019 01415	450 x 25mm	PG	1

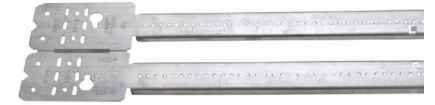
Marco Cable Basket Clamp Large



Code	Size	Finish	Qty
3012 03307	To suit 55mm deep basket, with 6.5mm hole.	EZ	1

Box Supports

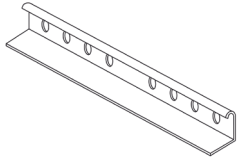
Caddy Style Strap Box Supports



For easy mounting of conduit and boxes.

Code	Size	Qty
3032 01701	400 – 600mm	50

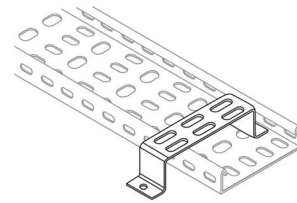
Wrap Over Couplers - 25mm Deep



Sold in pairs.

Code	Size	Finish	Qty
3019 01440	240mm	PG	2

Stand-off Brackets



Code	Size	Finish	Qty
3020 01448	100mm	PG	1

Conduit

20mm & 25mm Galvanised Conduit



Code	Size	Finish	Qty
3031 12976	20mm x 3.0m	Class 4	1
3031 12975	25mm x 3.0m	Class 4	1

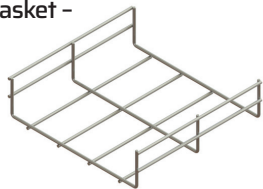
32mm Galvanised Conduit



Code	Size	Finish	Qty
3031 01686	32mm x 3.75m	Class 4	1

Cable Basket

Marco Cable Basket - 55mm Deep (3m lengths)



Code	Size	Finish	Qty
3013 14380	100 x 55mm x 3m	EZ	1
3013 14385	150 x 55mm x 3m	EZ	1
3013 14381	200 x 55mm x 3m	EZ	1
3013 14382	300 x 55mm x 3m	EZ	1

Marco Cable Basket Fast Fix Coupler



Code	Size	Finish	Qty
3012 03319	To suit 55mm deep basket, 75mm to 200mm wide.	PG	1

Conlok

Conlok is a labour-saving range of quick fit conduit boxes and couplers for standard conduit tube. Conlok boxes and couplers have no thread and are easy to mechanically lock into place using a Conlok allen key and a 12.9 grade z/p socket grub screw.

Contact your account manager for more details.



Studding & Studding Accessories

BZP 3m Studding (DIN 976-1/ 50° Pitch / Grade 4.8)



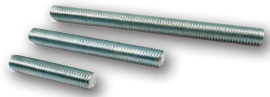
Code	Size	Finish	Qty
4020 15924	M10 x 3m	BZP	1

BZP 3m Studding (DIN 976-1/ 60° Pitch / Grade 4.8)



Code	Size	Finish	Qty
4020 03142	M6 x 3m	BZP	1
4020 11507	M8 x 3m	BZP	1
4020 03145	M10 x 3m	BZP	1
4020 03147	M12 x 3m	BZP	1

BZP Cut Studs



Other sizes available.

Code	Size	Finish	Qty
4020 03156	M10 x 30mm	BZP	1
4020 03158	M10 x 40mm	BZP	1
4020 03159	M10 x 50mm	BZP	1
4020 03161	M10 x 60mm	BZP	1
4020 06507	M10 x 70mm	BZP	1

Galvanised 3m Studding (DIN 976-1/ 60° Pitch / Grade 4.6)



Code	Size	Finish	Qty
4020 03180	M10 x 3m	Galvanised	1

Studding Protection Caps



Code	Size	Finish	Qty
4020 13391	M8	Black	100
4020 03191	M10	Black	100

Studding Female Backplates



Code	Size	Finish	Qty
3211 02057	Dual M8/M10	BZP	100

Studding Connectors



Code	Size	Finish	Qty
4020 03173	M8	BZP	10
4020 03174	M10	BZP	10

Bolt Protection Caps



Code	Size	Finish	Qty
4011 02668	M8	Black	100
4011 02670	M10	Black	100

Hex Nuts



Other sizes and finishes available.

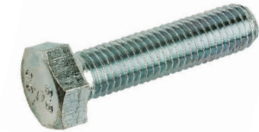
Code	Size	Finish	Qty
4017 02971	M6	BZP	100
4017 02972	M8	BZP	100
4017 02973	M10	BZP	100
4017 02996	M10	HDG	100
4017 02974	M12	BZP	100

Hex Set Screws & Nuts

Hex Set Screws (Grade 8.8)



See page 7.



Other sizes and finishes available.

Code	Size	Finish	Qty
4015 02822	M6 x 25mm	BZP	100
4015 02832	M8 x 20mm	BZP	100
4015 02833	M8 x 25mm	BZP	100
4015 02834	M8 x 30mm	BZP	100
4015 02836	M8 x 40mm	BZP	100
4015 02778	M10 x 20mm	BZP	100
4015 12685	M10 x 25mm	BZP	100
4015 02841	M10 x 25mm	HDG	100
4015 02780	M10 x 30mm	BZP	100
4015 02781	M10 x 35mm	BZP	100
4015 02782	M10 x 40mm	BZP	100
4015 02783	M10 x 50mm	BZP	100

Washers

Penny Washers



Other sizes and finishes available.

Code	Size	Finish	Qty
4022 03219	M6 x 25mm	BZP	100
4022 03222	M8 x 25mm	BZP	100
4022 03223	M8 x 30mm	BZP	100
4022 03210	M10 x 25mm	BZP	100
4022 03258	M10 x 25mm	HDG	100
4022 03214	M12 x 30mm	BZP	100

Washers

Spring Washers



BEST SELLER

Other sizes and finishes available.

Code	Size	Finish	Qty
4022 03249	M8	BZP	100
4022 03250	M10	BZP	100
4022 06540	M10	HDG	100

Plain Washers (Form A)



Other sizes and finishes available.

Code	Size	Finish	Qty
4022 03229	M8	BZP	100
4022 03230	M10	BZP	100
4022 03262	M10	HDG	100
4022 03231	M12	BZP	100

Black Rubber Lined Clips (M8/M10)



Other sizes available.

Code	Size	Finish	Qty
3217 12532	20-25mm	½"	50
3217 12533	26-30mm	¾"	50
3217 12537	50-55mm		50
3217 12475	108-116mm	4"	50

Fixings

Roofing Bolts & Nuts



Code	Size	Finish	Qty
4018 03028	M6 x 12mm	BZP	100
4018 03030	M6 x 16mm	BZP	100
4018 03032	M6 x 20mm	BZP	100
4018 03033	M6 x 25mm	BZP	100
4018 03034	M6 x 30mm	BZP	100

Spring Toggles



Code	Size	Qty
4019 03736	M5	100
4019 03737	M6	50
4019 03738	M8	50
4019 03739	M10	50

Standard Wedge Nuts



Code	Size	Finish	Qty
3813 03309	M6	BZP	100
3813 03310	M8	BZP	100
3813 03311	M10	BZP	100

Aluminium Rivets



Code	Size	Grip Range	Qty
4112 03323	4.0 x 10mm	5.0 - 6.5mm	1000
4112 03324	4.0 x 12mm	7.0 - 8.5mm	1000

Speed Plug - Standard



BEST SELLER

Code	Size	Qty
4119 03735	1-15mm fixing thickness	100

JCP Standard Wedge Anchors



BEST SELLER



Code	Size	Finish	Qty
3819 03974	M8 x 30mm	ZYP	100
3819 03977	M10 x 40mm	ZYP	100

Anchors

Lindapter Decking Fixings



We stock a range of Lindapter fixings designed to fit common decking profiles. Choose from:

- Type AW Lindapter Alphawedge
- Type TR60 Lindapter
- Type MW2 Lindapter Multiwedge
- Type AMD Lindapter
- Type COM Lindapter
- Type MF Lindapter Metfloor
- Type SM Lindapter
- Type SD2 Lindapter Slimdek 2

Contact your account manager for more details.

JCP Lipped Wedge Anchors



BEST SELLER



Code	Size	Finish	Qty
3819 03971	M8 x 30mm	ZYP	100
3819 03972	M10 x 30mm	ZYP	50

FINISH KEY: PG PRE GALV HDG HOT DIP GALV EZ ELECTRO ZINC BZP BRIGHT ZINC PLATED ZYP ZINC & YELLOW PLATED

Anchors

JCP Concrete Screw Rod Hangers



SPECIAL OFFER
See page 6.



Finish: BZP

Code	Size	Embed Depth	Socket Size	Qty
3814 05721	M10 (6mm drill bit)	40mm	13mm	100

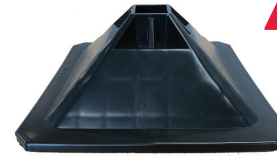
JCP Concrete Screws Hex Flange Head



Finish: BZP

Code	Size	Tensile Load kN	Socket Size	Qty
3814 06420	M6 x 50mm (5mm drill bit)	1.2	8mm	100
3814 03312	M8 x 50mm (6mm drill bit)	1.5	10mm	100

Plastic H Frame Foot



BEST SELLER

Code	Size	Weight Load	Qty
3312 03457	305mm / To suit 41x41 channel	175kg	1

MiniFoot



Ideal for all lightweight installations, as each MiniFoot can support 25kg. They are quick and easy to install and compatible with various 41mm channel types. MiniFoot are made from High Density Nylon Plastic with an anti-vibration and anti-slip 5mm foam pad on the base.

Contact your account manager for more details.

Loose Bolt Shield Anchors



Code	Size	Max Fixing	Finish	Qty
3816 03921	M10 x 75mm	10mm	Zinc Yellow	50
3816 03922	M10 x 90mm	25mm	Zinc Yellow	50

Flange Clamps



BEST SELLER

Code	Size	Qty
3811 02592	M8	1
3811 02590	M10	1
3811 02591	M12	1

Suspension Products

Wire Hangers



Code	Size	Eye Diameter	Qty
3416 02613	M6 x 60mm	6.5mm	100

Eye Bolts



Code	Size	Finish	Qty
4024 02601	M6 x 80mm	BZP	100
4024 02602	M8 x 80mm	BZP	100
4024 02603	M10 x 80mm	BZP	100

Roof & Mounting Supports

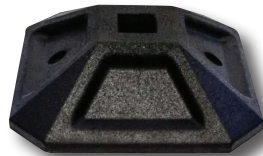
Rubber Foot with Strut



SPECIAL OFFER
See page 4.

Code	Size	Qty
3312 15844	250 (L) x 185 (W) x 100 (H) mm	1
3312 17182	400 (L) x 185 (W) x 100 (H) mm	1
3312 17183	600 (L) x 185 (W) x 100 (H) mm	1
3312 02581	1000 (L) x 185 (W) x 100 (H) mm	1

Rubber H Frame Foot



Code	Size	Weight Load	Qty
3312 02567	350mm / To suit 41x41 channel	200kg	1

B-Lock



SPECIAL OFFER
See page 24.

Code	Size	Safe Working Load	Qty
3417 11897	For 1.5-2.5 wire	Up to 60kg	50

B-Lock Catenary Wire



SPECIAL OFFER
See page 24.

Code	Thickness	Length	Qty
3417 05915	2mm	100m	1

FINISH KEY: PG PRE GALV HDG HOT DIP GALV EZ ELECTRO ZINC BZP BRIGHT ZINC PLATED ZYP ZINC & YELLOW PLATED

Sealants, Paints & Tapes

General Purpose Silicone



BEST SELLER

Code	Size	Colour	Qty
5012 04036	270ml	White	1

Styrene Free Polyester Resin



Code	Size	Qty
3815 03827	300ml	1

Bright Galv Paint



Code	Size	Colour	Qty
5014 12097	500ml	Silver Zinc	1

Cloth Tape



Code	Size	Colour	Qty
5011 04008	48mm x 50m	Silver	1
5011 04006	48mm x 50m	Black	1

Cutting Blades

Metal - Inox Ultra-Thin Disc



Code	Size	Thickness	Qty
8011 04339	115 x 22.2mm	1.0mm	25

Bosch Jigsaw Blades for Metal - T118A



Code	Length	Tooth Spacing	Qty
8022 04740	92mm	1.1-1.5mm	5

PPE

**Nylon Gloves (PCN)
Glove Specification -
3131X/EN388:2016**



BEST SELLER

Code	Size	Colour	Qty
7014 04252	9	Black	12 Pairs
7014 04254	10	Black	12 Pairs

**Cut Level 3 Gloves
Glove Specification - 4X42C/
EN388:2016**



Code	Size	Qty
7014 04241	9	12 Pairs
7014 04242	10	12 Pairs

**Premium Sports Safety
Specs - Anti Scratch**

SPECIAL OFFER
See page 7.



Code	Qty
7012 04226	12 Pairs

**WE STOCK
A WIDE RANGE OF
PPE**

- Gloves
- Hi-Vis waistcoats
- Jackets
- Safety specs
- Dust masks
- Safety helmets



Contact your account manager for more details.

“ Seriously, I can’t fault the service from anyone in the company. ”

Purchasing Manager,
Electrical Sector





Simply order by 5pm for next day delivery or collection in 1 hour. Contact our team on 01322 274226 or via sales@fixmart.co.uk.

B-Lock Catenary Wire



£16.95
OFFER PRICE

Code	Thickness	Length	Qty
3417 05915	2mm	100m	1

B-Lock



PRICE FOR 1
£1.09
SOLD IN PACKS OF 50

Code	Size	Safe Working Load	Qty
3417 11897	For 1.5 - 2.5 wire	Up to 60kg	50

in f X

UNIT 5, SPRINGHEAD ENTERPRISE PARK,
SPRINGHEAD ROAD, NORTHFLEET, KENT DA11 8HJ

T 01322 274226 / E SALES@FIXMART.CO.UK



ORDER BY 5PM
FOR NEXT DAY
DELIVERY!

WWW.FIXMART.CO.UK / ELECTRICAL-WHOLESALERS